

SciClone™



SciClone™ Oil-Grit Separator Overview



About Imbrium® Systems

Imbrium® Systems is dedicated to protecting Canada's waterways. Based on our knowledge and experience in the Canadian stormwater industry, we have the ability to provide the most effective stormwater treatment technologies that capture and retain harmful pollutants from urban runoff before it enters our streams, rivers, lakes, and oceans.

Imbrium's engineered treatment solutions have been third-party tested and verified in accordance with the ISO 14034 Environmental Technology Verification (ETV) protocol to ensure performance in real-world conditions as designed. Our team of highly skilled engineers and partners provide the highest level of service from design to installation and long-term maintenance.

By working with Imbrium and our partners, you can expect superior treatment technology, unparalleled customer service, compliance with local stormwater regulations, and cleaner water. To find your local representative, please visit www.imbriumsystems.com/localrep.



Learn About the SciClone™

Go online and watch our animation to learn how the SciClone works. The animation highlights important features of the SciClone including:

- Functionality
- Applications
- Inspection and Maintenance

To view the SciClone animation, visit www.imbriumsystems.com/sciclone



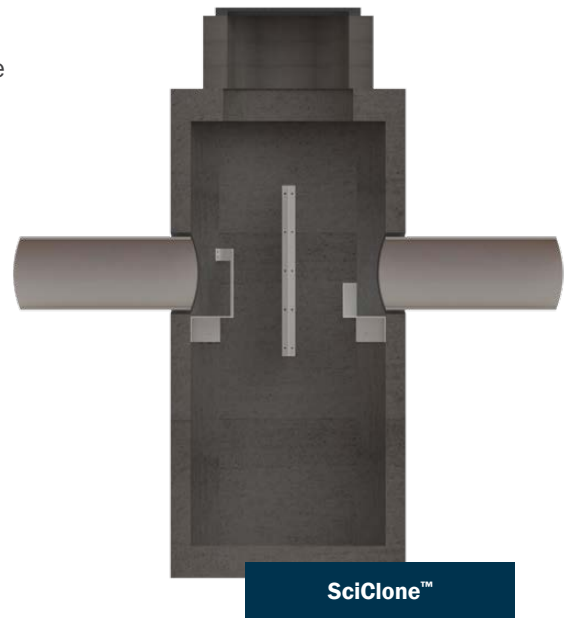
SciClone™ Oil-Grit Separator

The SciClone is designed to capture and retain sediment, trash, and hydrocarbons, and comes equipped with an internal bypass. The SciClone is manufactured with polypropylene internal components which are non-corrosive and extremely durable.

The SciClone is designed with clear visibility and access from the surface for easy visual inspection and maintenance. This comprehensive system is the ultimate combination of reliability and cost-effective hydrodynamic separation.

Ideal Uses

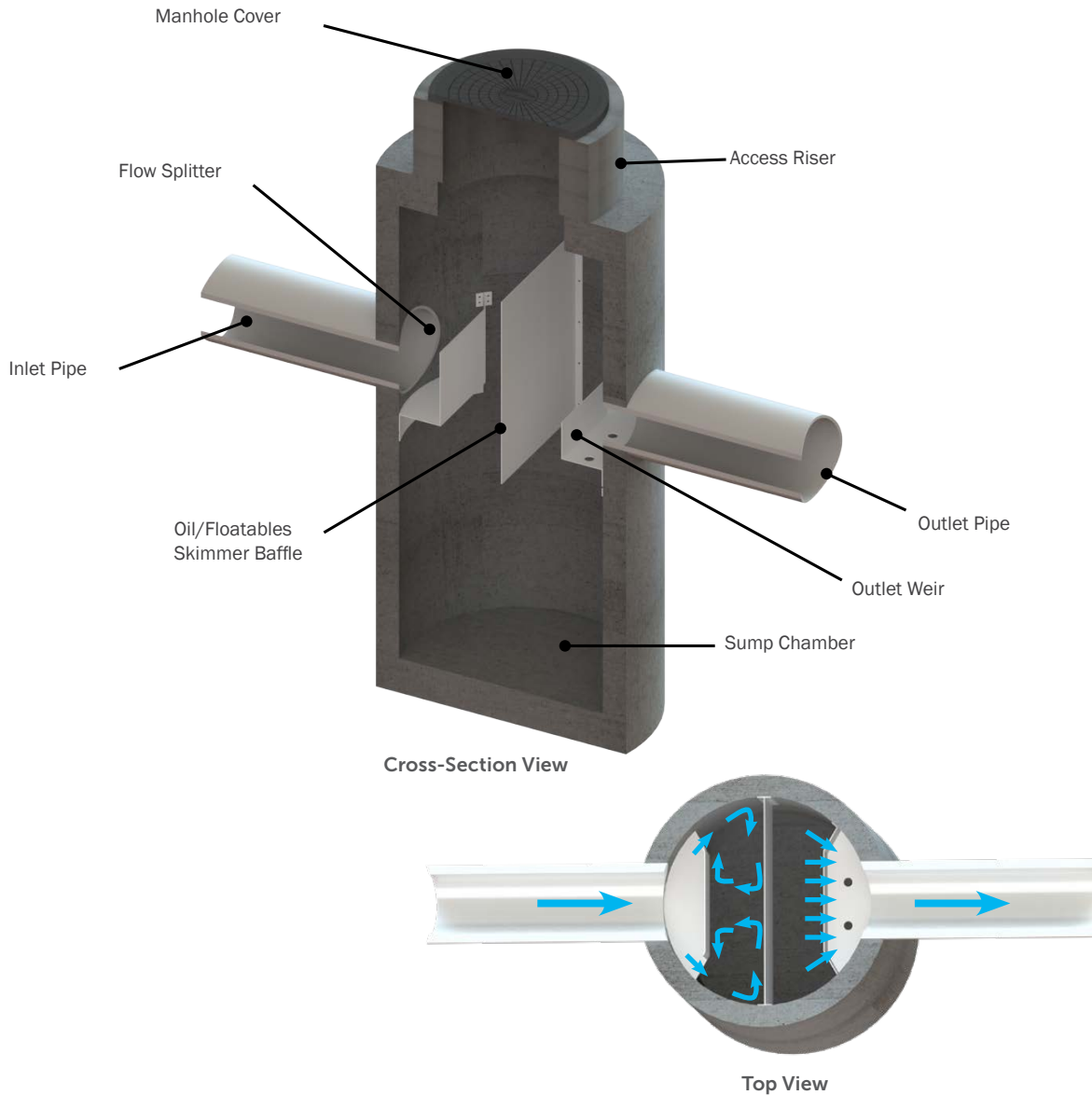
- Sediment (TSS) removal
- Debris and small floatables capture
- Pretreatment for filtration, detention/retention systems, ponds, wetlands, and bioretention
- Retrofit and redevelopment projects



SciClone™ Sizing Chart

MODEL	DIAMETER		SEDIMENT STORAGE CAPACITY		SURFACE AREA	
	(ft)	(mm)	(ft ³)	(m ³)	(ft ²)	(m ²)
SC-4	4	1219	19	0.54	12.6	1.17
SC-5	5	1524	29	0.82	19.6	1.82
SC-6	6	1829	42	1.21	28.3	2.63
SC-8	8	2438	75	2.15	50.2	4.66
SC-10	10	3048	118	3.35	78.5	7.29
SC-12	12	3658	170	4.83	113.02	10.5

How the SciClone™ Works



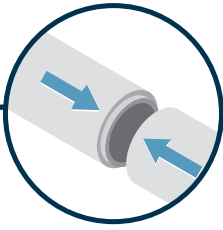
- The SciClone Separator's inlet flow splitter redirects inlet flows away from the center of the chamber in two directions along the system's perimeter creating two swirling vortices.
- Floatables are trapped by the baffle wall.
- Fine sediment settles down to the bottom of the sump chamber, maximizing sediment collection.
- As water passes under the oil/floatables skimmer, flows travels upward to the crest of the outlet weir.

SciClone™ Features & Benefits



EASY TO INSTALL

Small footprint saves time and money with limited disruption to your site.



SEAMLESS

Minimal drop between inlet and outlet pipes makes SciClone ideal for retrofits and new development projects.

FEATURES	BENEFITS
Unique inlet flow splitter and outlet weir	High sediment removal performance
100% non-corrosive components	Reliability and a long-service life
Internal high-flow bypass	Eliminates the need for a separate bypass structure
Clear access to sump and stored pollutants	Fast, easy maintenance



SciClone™ Applications

SciClone is commonly used in the following stormwater applications:

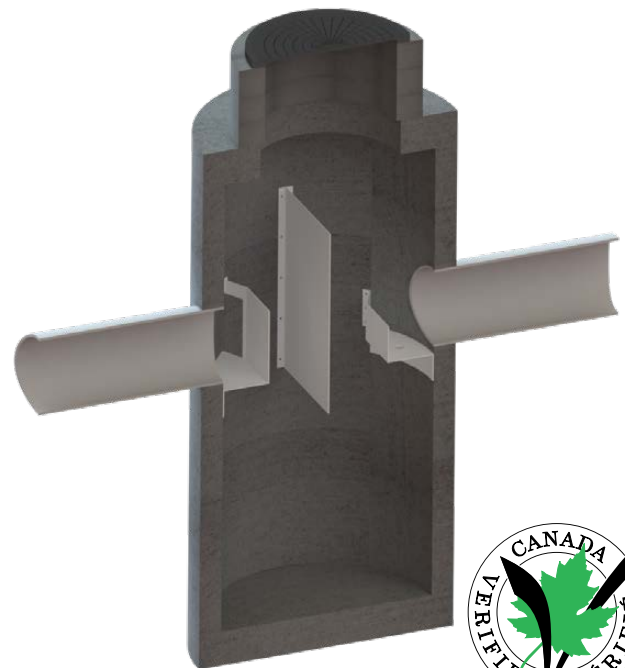
- Stormwater quality control – trash, debris, sediment, and hydrocarbon removal
- Urban retrofit and redevelopment
- Inlet and outlet protection
- Pretreatment for filtration, detention/infiltration, bioretention, rainwater harvesting systems, and Low Impact Development designs



SciClone™ Approvals

SciClone is approved through numerous local, state and federal verification programs, including:

- New Jersey Department of Environmental Protection (NJDEP)
- New Jersey Corporation for Advanced Technology (NJCAT) Verification
- Tested per the Canadian Environmental Technology Verification (ETV) Program's Procedure for Laboratory Testing of Oil-Grit Separators
- Verified in accordance with ISO14034 protocols



*Performance Claim Verified
by the Canadian ETV Program*

SciClone™

Installation of the SciClone Separator is quick and easy. The system is composed of a base section, a middle riser with holes for pipe connections and internals preinstalled, a top, risers to bring access to finish surface, and access covers. Installation of the system follows the same procedures as a standard manhole installation.



Step 1: Install the base section.



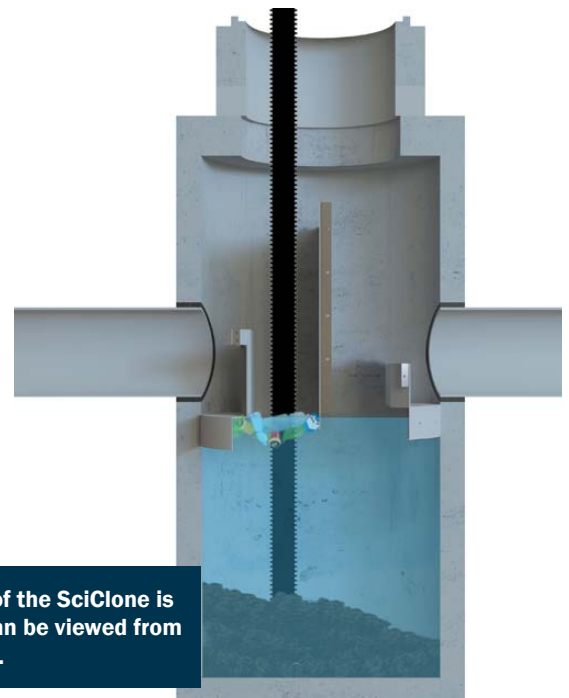
Step 2: Lift and place middle riser.



Step 3: Place top slab with access holes.

SciClone™ Maintenance

The entire sump is accessible and can be viewed from the finished surface, and is completely open from the top to bottom. The system can be accessed from both sides of the baffle wall, providing unobstructed access to stored pollutants, making it easy to maintain using a vacuum truck, with no requirement to enter the unit.



The entire sump of the SciClone is accessible and can be viewed from the finish surface.

ADDITIONAL SOLUTIONS



STORMCEPTOR® EF

The “EF” Stormceptor® effectively targets sediment (TSS), free oils, gross pollutants and other pollutants that attach to particles, such as nutrients and metals, Stormceptor delivers protection 24/7.



JELLYFISH® FILTER

The Jellyfish® Filter is a stormwater treatment technology featuring pretreatment and membrane filtration in a compact stand-alone treatment system that removes a high level and a wide variety of stormwater pollutants.

LEARN MORE

- Access project profiles, photos, videos, and more online at www.imbriumsystems.com/stormceptoref.

REQUEST DESIGN ASSISTANCE

- Call us at (888) 279-8826 or 301-279-8827 to talk to one of our engineers for technical support or design assistance.

START A PROJECT

- Submit your system requirements on our product Design Worksheet at www.imbriumsystems.com/pdw.

FIND A LOCAL REPRESENTATIVE

- Visit www.imbriumsystems.com/localrep for contact information for your local Imbrium representative.



© 2023 Imbrium Systems Inc.

+1 416-960-9900

www.imbriumsystems.com

All Rights Reserved.

Imbrium® Systems is an engineered stormwater treatment company that designs and manufactures stormwater treatment solutions that protect water resources from harmful pollutants. By developing technologies to address the long-term impact of urban runoff, Imbrium ensures our clients' projects are compliant with government water quality regulations. For information, visit www.imbriumsystems.com or call +1 416-960-9900.

Get Social With Us!



SciClone Bro 7/23 PDF



MADE IN CANADA
By Canadians, for Canadians.

NOTHING IN THIS CATALOG SHOULD BE CONSTRUED AS AN EXPRESSED WARRANTY OR AN IMPLIED WARRANTY OF MERCHANTABILITY OR FITNESS FOR ANY PARTICULAR PURPOSE. SEE THE IMBRIUM STANDARD CONDITIONS OF SALE (VIEWABLE AT WWW.IMBRIUMSYSTEMS.COM/TERMS-OF-USE) FOR MORE INFORMATION.